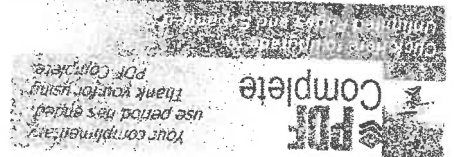
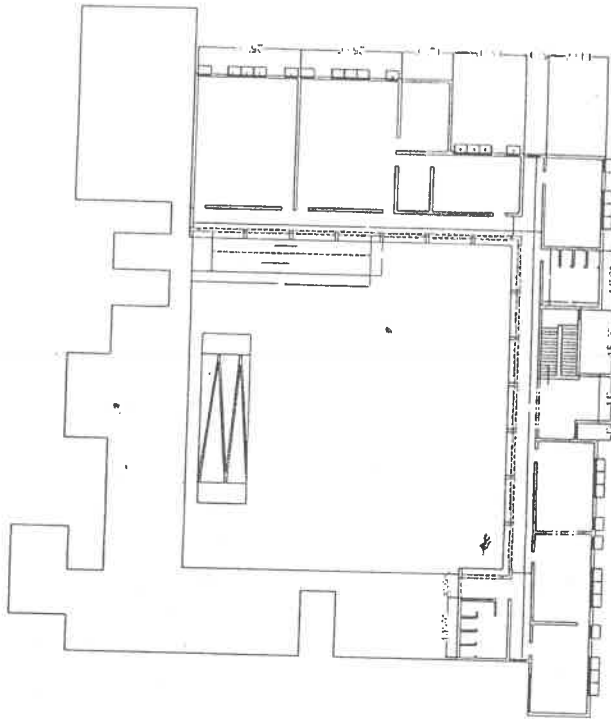


Architectural floor plan of a building. The plan shows a large central hall with a staircase, and several smaller rooms and corridors. A line points from a note to a specific area in the plan.

Architectural floor plan of a building. The plan shows a large central hall with a staircase, and several smaller rooms and corridors. A line points from a note to a specific area in the plan.



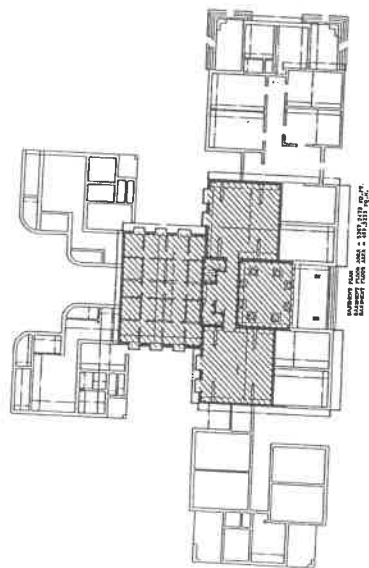
Dr. P. D. Dhanu
Head
Deptt. of Teacher Training & NFE
(IASE)
Faculty of Education
Jamia Millia Islamia



Architectural floor plan of a building. The plan shows a large central hall with a staircase, and several smaller rooms and corridors. A line points from a note to a specific area in the plan.

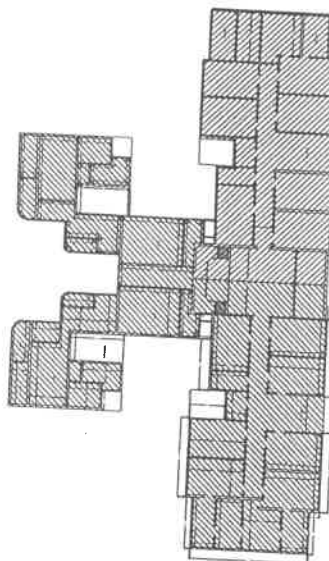
Architectural floor plan of a building. The plan shows a large central hall with a staircase, and several smaller rooms and corridors. A line points from a note to a specific area in the plan.

Dr. P. D. Dhanu
Executive Engineer
Building & Construction Department
Jamia Millia Islamia
New Delhi-110025

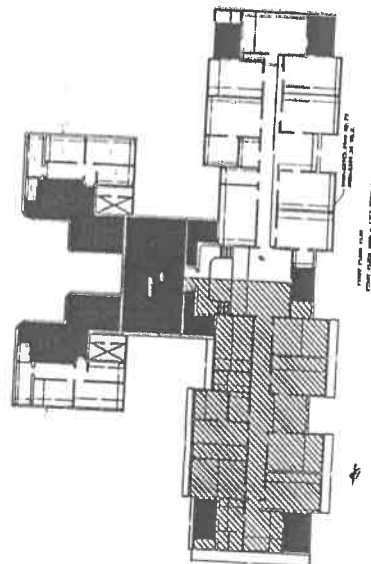


LABORATORY PLAN
 SURFACE AREA: 10,000 sq. ft.
 TOTAL AREA: 10,000 sq. ft.

LABORATORY PLAN
 SURFACE AREA: 10,000 sq. ft.
 TOTAL AREA: 10,000 sq. ft.




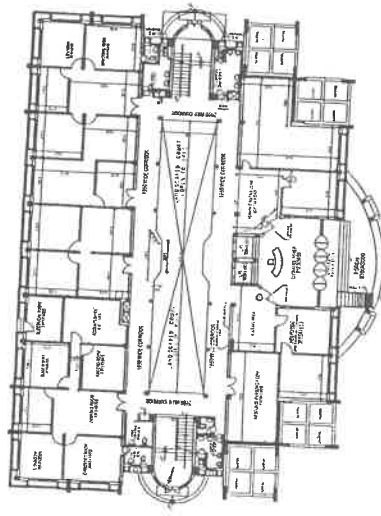
LABORATORY PLAN
 SURFACE AREA: 10,000 sq. ft.
 TOTAL AREA: 10,000 sq. ft.



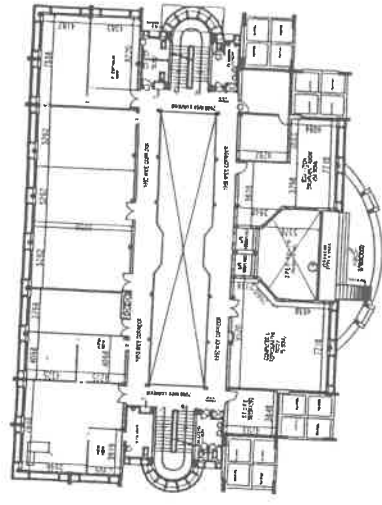
LABORATORY PLAN
 SURFACE AREA: 10,000 sq. ft.
 TOTAL AREA: 10,000 sq. ft.



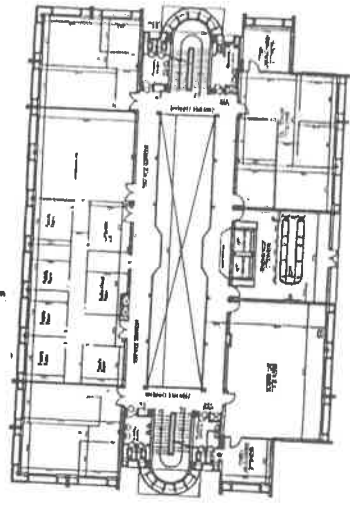

 Head
 Deptt. of Teacher Training & NFE
 (IASE)
 Faculty of Education
 Jamia Millia Islamia



PAFI GROUND FLOOR PLAN
AREA = 991.5 SQM



PAFI FIRST FLOOR PLAN
AREA = 717.7 SQM

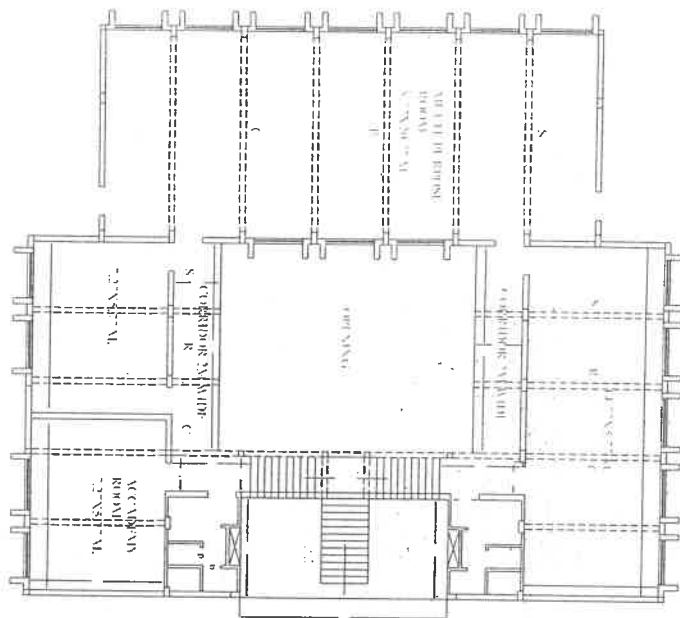


PAFI SECOND FLOOR PLAN
AREA = 525.34 SQM

Signature

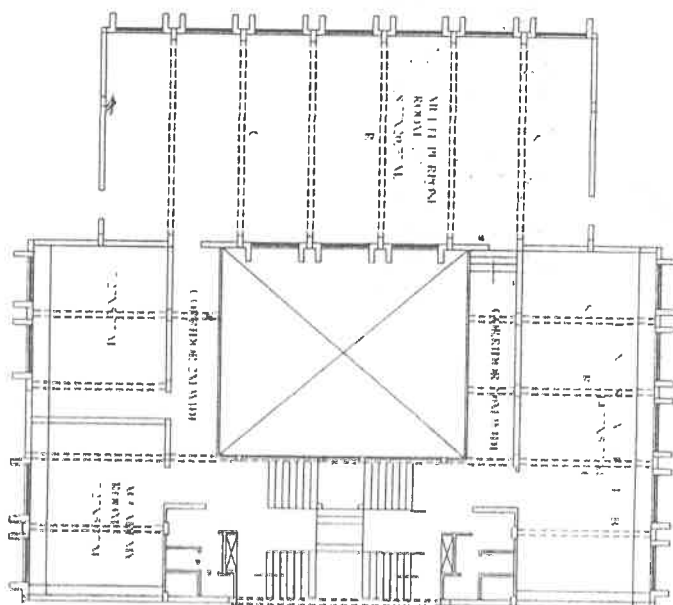
Head
Deptt. of Teacher Training & NFE
(IASE)
Faculty of Education
Jamia Millia Islamia
New Delhi-110025

Signature
EXECUTIVE ENGINEER
BUILDING & CONSTRUCTION DEPARTMENT
JAMIA MILLIA ISLAMIA
JAMIA NAGAR, NEW DELHI-110025



L.A.S.T. BLOCK
GROUND FLOOR PLAN T.L.L. BUILDING
GROUND FLOOR COVERED AREA = 574.24 - 94 = 480.24 sqm.

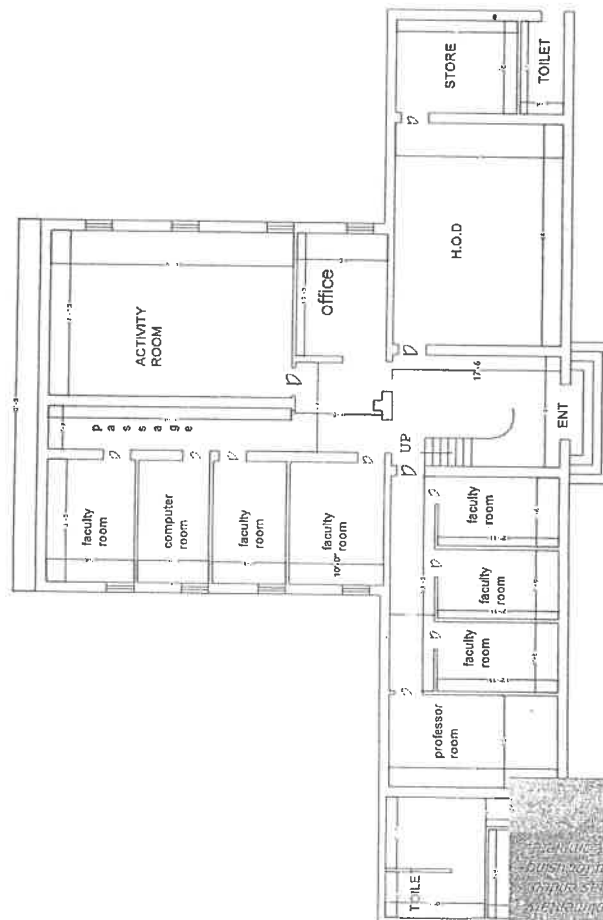
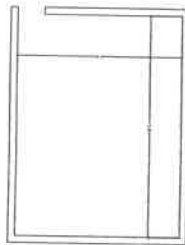
Shon



FIRST FLOOR PLAN T.L.L. BUILDING
FIRST FLOOR COVERED AREA = 574.24 - 94 = 480.24 sqm.

Shon
18/9/22

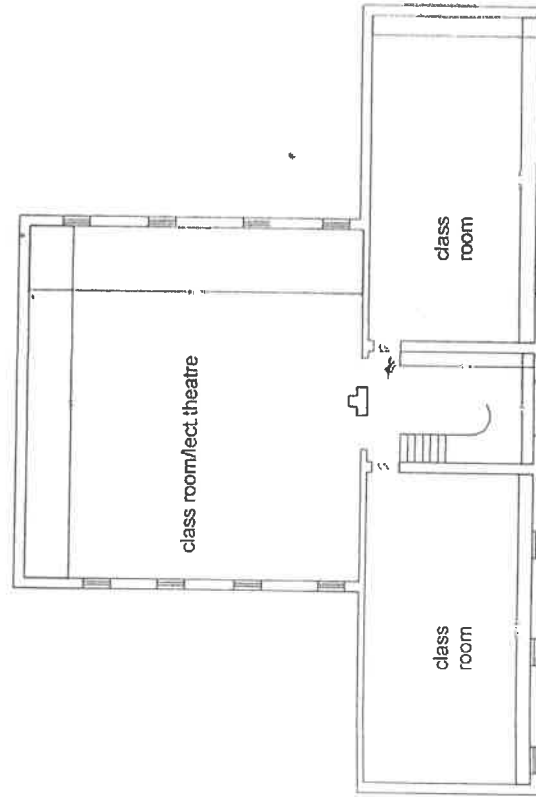
EXECUTIVE ENGINEER
BUILDING & CONSTRUCTION DEPARTMENT
JAMIA MILLIA ISLAMIA
JAMIA MILLIA, NEW DELHI 110025



GROUND FLOOR PLAN

GROUND FLOOR (PLAN) AREA = 3512.583 SQ.FT.

GROUND FLOOR (PLAN) AREA = 326.44 SQ.M.



FIRST FLOOR PLAN

FIRST FLOOR AREA = 3228.042 Sq.FT.

FIRST FLOOR AREA = 300.0 Sq.M.

15/5/17
 EXECUTIVE ENGINEER
 BUILDING & CONSTRUCTION DEPARTMENT
 JAMIA MILLIA ISLAMIA
 JAMIA NAGAR, NEW DELHI-110025

Dr. J. K. Sharma
 Dept. of Teacher Training & R.T.E.
 Faculty

NCTE Regulation 2014 Clause 7(14)(f)- Infrastructural Facilities
Department of Teacher Training and Non Formal Education (IASE),

Jamia Millia Islamia

Infrastructural Facilities

Classrooms

The department comprises of spacious and well ventilated rooms with modern infrastructure and comfortable sitting furniture

(photo>

Library with Reading Room

The Department has an excellent library and information centre. Central support services of the institution acts as primary source of information to students, faculty and research scholars. The library has sufficient number of books for reading and reference. The library subscribes to all important News papers, Magazines, National and International journals on.

(photo>

Computer Laboratory

Computer laboratory in the Department is equipped with latest computers and high-speed internet is available to enable students to widen their knowledge with regard to the latest technological innovations in the field.

(photo>

Laboratories

The Department has spacious well designed, modern and equipped laboratories with preparation rooms responsive to current and future needs for performing practical tasks and research work. Machine room and instrumentation room are also available.

(photo>

Seminar Hall

The Department has well furnished seminar halls with state-of-the-art audio visual equipments. Regular guest lectures' by the dignitaries of national and international stature are arranged. Personality development and communication skill workshops are also organised regularly. The Department believes in overall development of the students.

(photo>

Indoor Game Hall

An indoor game hall is a facility designed for playing various indoor games and activities. These halls are often equipped with amenities and equipment to accommodate different types of games, providing a controlled and comfortable environment for participants. Some common features and activities found in indoor game halls include badminton, table tennis, basketball, volleyball, or indoor soccer and video games, pinball machines, and other electronic entertainment.

(photo>

Gymnasium

Department gymnasium facilities typically provide students with spaces and equipment for physical fitness, sports, and recreational activities. Here are common features and aspects you might find in Department gymnasium facilities.

(photo>

Open Play Ground

An open playground facility in a Department provides a designated space for various outdoor activities, sports, and recreation. Here are some common features and aspects you might find in a Department open playground facility.

(photo>

Office of H.O.D.

The room in an educational institution, such as a school or Department, is an important and typically private space designated for the principal's administrative and professional activities. Here are some common features and elements you might find in a principal's room.

(photo>

Hostels with Canteen

Boy's and Girls's Hostels with a canteen would typically include facilities and services to accommodate students, providing them with living arrangements and dining options. Here are common features you might find in such a hostel.

(photo>

Art and Craft Room

An art and craft room is a dedicated space within an institution or facility designed for engaging in various artistic and creative activities. Here are common features and elements you might find in an art and craft room.

(photo>

NCTE Regulation 2014 Clouse 7(14)(g)- Facilities added in Last Quarter

Department of Teacher Training and Non Formal Education (IASE),

Jamia Millia Islamia

Facilities added in Last Quarter

NCTE Regulation 2014 Clouse 7(14)(h)- Library Information

**Department of Teacher Training and Non Formal Education (IASE),
Jamia Millia Islamia**

Library Information

The Department has an excellent library and information centre. Central support services of the institution acts as primary source of information to students, faculty and research scholars. The library has sufficient number of books for reading and reference. The library subscribes to all important News papers, Magazines, National and International journals on.

(photo>